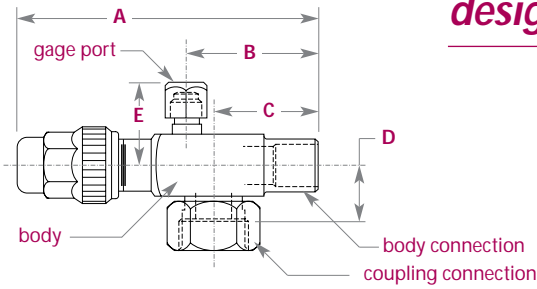
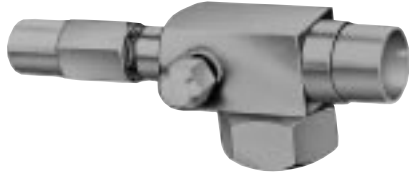


Valves Rotalock®

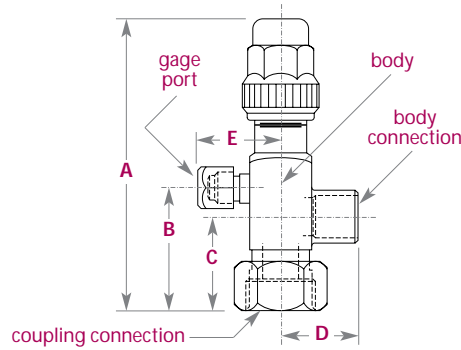
design features & ratings



use stem end of valve & coupling connection as reference when determining gage port position

Connections		Top Gage Port	Left Gage Port	Right Gage Port	Body Size	Dimensions (inches)				
Body	Coupling					A	B	C	D	E
3/8 flare	3/4-16	H03FT	H03FL	H03FR	3/4 hex	3 23/32	1 17/32	1 3/16	25/32	1
1/2 flare	1-14	H04FT	H04FL	H04FR	7/8 sq	4 1/8	1 23/32	1 5/16	3/4	1 1/16
5/8 flare	1-14	H05FT	H05FL	H05FR	7/8 sq	4 3/8	1 31/32	1 9/16	3/4	1 1/16
1/2 ids	1-14	H04ST	H04SL	H04SR	7/8 sq	4 1/32	1 5/8	1 7/32	3/4	1 1/16
5/8 ids	1-14	H05ST	H05SL	H05SR	7/8 sq	4 9/32	1 7/8	1 15/32	3/4	1 1/16
7/8 ids	1 1/4-12	H07ST	H07SL	H07SR	1 1/8 sq	5 3/8	2 11/32	1 11/16	31/32	1 3/16
1 1/8 ids	1 1/4-12	H09ST	H09SL	H09SR	1 1/8 sq	5 5/8	2 19/32	1 15/32	31/32	1 3/16
1 3/8 ids	1 3/4-12	H11ST	H11SL	n/a	1 3/8 sq	7 3/16	3 5/16	2 15/32	1 3/16	1 5/16

use stem end of valve & body connection as reference when determining gage port position



Connections		Top Gage Port	Left Gage Port	Right Gage Port	Body Size	Dimensions (inches)				
Body	Coupling					A	B	C	D	E
3/8 flare	3/4-16	V03FT	V03FL	V03FR	3/4 hex	3 1/16	1 5/32	13/16	1 1/8	1
1/2 flare	1-14	V04FT	V04FL	V04FR	7/8 sq	3 5/16	1 9/32	7/8	1 9/32	1 1/16
5/8 flare	1-14	V05FT	V05FL	V05FR	7/8 sq	3 5/16	1 9/32	7/8	1 17/32	1 1/16
1/2 ids	1-14	V04ST	V04SL	V04SR	7/8 sq	3 11/16	1 9/32	7/8	1 1/32	1 1/16
5/8 ids	1-14	V05ST	V05SL	V05SR	7/8 sq	3 11/16	1 9/32	7/8	1 1/32	1 1/16
7/8 ids	1 1/4-12	V07ST	V07SL	V07SR	1 1/8 sq	4 25/32	1 3/4	1 3/32	1 9/16	1 3/16
1 1/8 ids	1 1/4-12	V09ST	V09SL	V09SR	1 1/8 sq	4 25/32	1 3/4	1 3/32	1 13/16	1 3/16
1 3/8 ids	1 3/4-12	V11ST	V11SL	n/a	1 3/8 sq	6 3/16	2 5/16	1 15/32	2 3/16	1 5/16